

Bridas *Clips*

Complementos
Complements

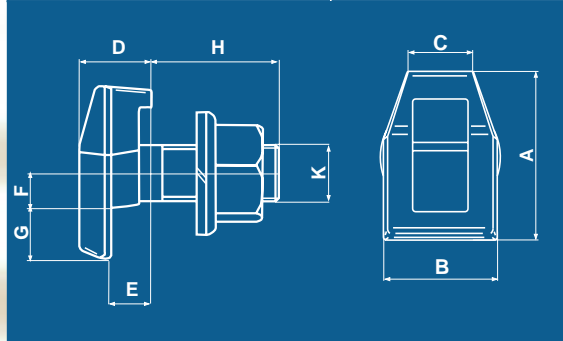


Bridas Clips



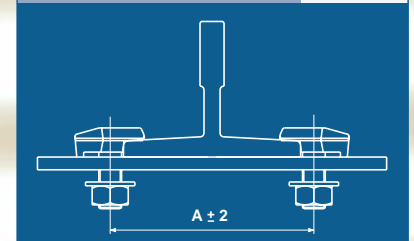
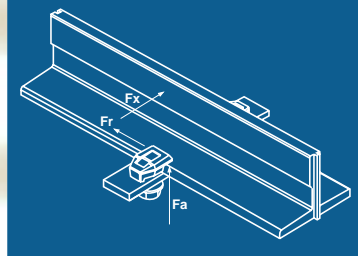
Bridas Forjadas Forged Clips

BRIDAS FORJADAS - TIPO M FORGED CLIPS - TYPE M												
Tipo Type	NºPz./Caja Nr. Pc./Box	PesoCaja/Kg. Box Weight/Kg.	Aplicaciones Applications	A ± 1,5 mm.	B ± 1,5 mm.	C ± 1,5 mm.	D ± 0,9 mm.	E ± 0,75 mm.	F ± 0,5 mm.	G ± 0,9 mm.	H ± 1,5 mm.	K
M1	500	33	T45/A, T50/A, T65/A	32	22	15	12	5,5	5	11	23	M10
M2	400	33	T70-1/A, T70-2/A, T75-3/A-B, T78/B, T82/A-B, T125-L1/A	39	26	19	15	7,3	6,5	13	27	M12
M3	250	30	T70-70-9/A, T80-80-9/A, T89/A-B, T90/A-B	45	29	21	18,5	9,5	8	13	34	M14
M4	200	36	T114/B, T125/B, T127-1/B	50	34	22	20,5	10,5	8,5	15	40	M16
M5	100	32	T127-2/B, T140-1/B, T140-2/B	55	37	22	23	13	11	17	42	M18



A ± 2 (mm.)	
TIPO GUIA TYPE GUIDE	BRIDA M M CLIP
T45/A	55
T50/A	60
T65/A	75
T70-1/A, T70-2/A	83
T70-70-9/A	86
T75-3/A-B	88
T78/B	91
T80-80-9/A	96
T82/A-B	95
T89/A-B	105
T90/A-B	106
T125-L1/A	138
T114/B	131
T125/B	142
T127-1/B	144
T127-2/B	149
T140-1/B	162
T140-2/B	162

	Resistencia Stress Fa (Kg.)	F. Rozamiento Friction force Fr (Kg.)
M1	1900	380
M2	2700	540
M3	3680	736
M4	3800	760
M5	5100	1020

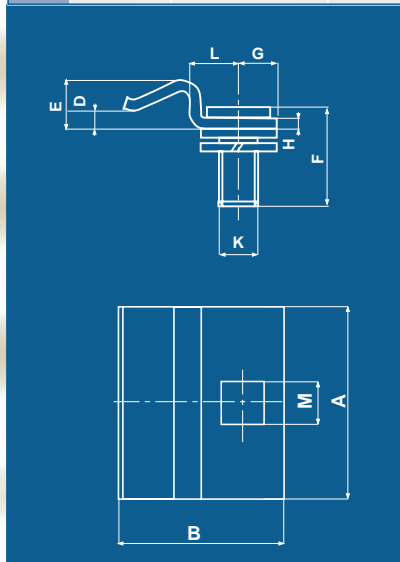




Bridas Elásticas Sliding Clips

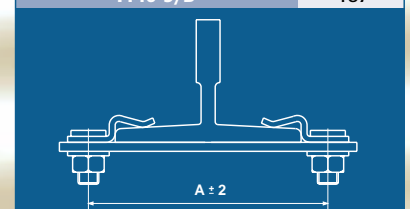
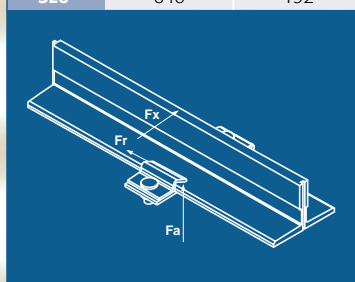
(*)Tolerancia L: / Tolerance L: SL1, SL2, SL3: +/-0,3
SL4, SL5, SL6: +/-0,5

BRIDAS ELASTICAS - TIPO SL SLIDING CLIPS - TYPE SL													
Tipo Type	NºPz./Caja Nr. Pc./Box	PesoCaja/Kg. Box Weight/Kg.	Aplicaciones Applications	A ±1,5 mm.	B ±1,5 mm.	D ±1 mm.	E ±0,75 mm.	F ±1 mm.	G ±1 mm.	H ±0,2 mm.	K	L (*) mm.	M mm.
SL1	500	22	T45/A, T50/A, T65/A	40	33,5	2	7	23	11	2	M8	9	□ 8,5
SL2	250	24	T70-1/A, T82/A-B, T78/B, T125-L1	70	45	3,5	7	28	13	2,5	M10	12	□ 10,5
SL3	150	23	T70-2/A, T70-70-9/A, T75-3/A-B	60	53	4	11	39	14	4	M12	18	□ 12,5
SL4	150	23	T80-80-9/A, T89/A-B, T90/A-B, T114/B, T127-1/B	65	52	7	13	45	13	4	M14	20	□ 14,5
SL5	50	18	T125/B, T127-2/B, T140-1/B, T140-2/B	75	70	9	15	50	22,5	5	M16	20	∅ 17
SL6	50	23	T140-3/B	75	82	11,8	28	50	22,5	6	M16	23,5	∅ 17



A ± 2(mm.)	
TIPO GUIA TYPE GUIDE	BRIDA SL SL CLIP
T45/A	63
T50/A	68
T65/A	83
T70-1/A, T70-2/A, T70-70-9/A	94
T75-3/A-B	111
T78/B	102
T80-80-9/A	120
T82/A-B	106
T89/A-B	129
T90/A-B	130
T125-L1/A	149
T114/B	154
T125/B	165
T127-1/B	167
T127-2/B	167
T140-1/B	180
T140-2/B	180
T140-3/B	187

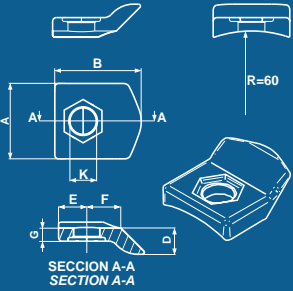
	Resistencia Stress Fa(Kg.)	F. Rozamiento Friction force Fr(Kg.)
SL1	125	38
SL2	297	89
SL3	349	105
SL4	288	87
SL5	402	121
SL6	640	192



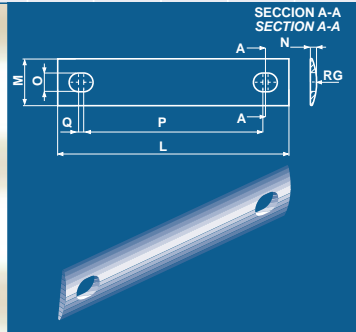


Bridas Combinadas Combined Clips

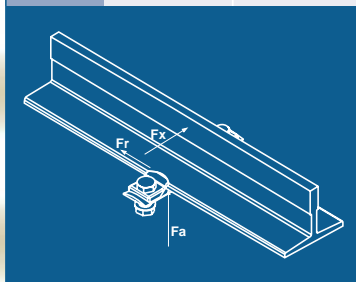
BRIDAS COMBINADA - TIPO SH COMBINED CLIPS - TYPE SH											
Tipo Type	NºPz./Caja Nr. Pc./Box	PesoCaja/Kg. Box Weight/K	Aplicaciones Applications	A ± 1,5 mm.	B ± 1,5 mm.	D ± 0,75 mm.	E ± 0,5 mm.	F ± 0,5 mm.	G ± 0,75 mm.	K mm.	Tornillo/Screw mm.
SH1	30	23	T89/A-B, T90/A-B, T114/B	40	44	14	15	18	7	14	M12x45
SH2	30	27	T125/B, T127-1/B, T127-2/B, T140-1/B, T140-2/B	45	55	20	20	18	10	18	M16x45



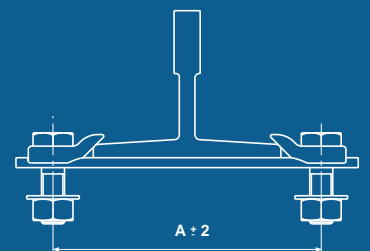
	L ± 1,5	M ± 1,5	N ± 0,75	O	P ± 0,5	Q ± 0,75	RG
T89/A-B, T90/A-B	183	45	6	14	133	5	60
T114/B	208	45	6	14	158	5	60
T125/B, T127-1/B	222	45	6	18	169	5	60
T127-2/B	230	45	6	18	178,5	5	60
T140-1/B	243	45	6	18	191,5	5	60
T140-2/B	250	45	6	18	195	5	60



	Resistencia Stress Fa(Kg)	F. Rozamiento Friction force Fr(Kg)
SH1	2850	30
SH2	5120	30



A ± 2(mm.)	
TIPO GUIA TYPE GUIDE	BRIDA SH SH CLIP
T45/A	-
T50/A	-
T65/A	-
T70-1/A, T70-2/A, T70-70-9/A	-
T75-3/A-B	-
T78/B	-
T80-80-9/A	-
T82/A-B	-
T89/A-B	138
T90/A-B	139
T114/B	163
T125/B	174
T127-1/B	174
T127-2/B	183,5
T140-1/B	196,5
T140-2/B	200



BRIDAS FORJADAS

Forjadas en caliente, amarran la guía ejerciendo gran presión sobre ella.

Se recomienda su utilización en edificios de poca altura, pues podrían producirse torceduras en la guía por pandeo, debido a la compresión del edificio y a las diferencias de temperatura.

FORGED CLIPS

Hot forged clips that hold the guide rail down by exercising great pressure on it.

Their use is recommended in buildings that are not very high, since warp due to buckling might appear in the guide rail, as result of the compression of the building and the differences in temperature.

BRIDAS ELASTICAS

Ejercen poca presión sobre la guía, por estar fabricadas de chapa doblada.

Aptas para ser instaladas en edificios de gran altura, si bien se recomienda restringir su utilización a esfuerzos pequeños.

SLIDING CLIPS

They exercise little pressure on the guide since they are manufactured using shaped plate. They are suitable for being installed in buildings of a great height, although we recommend their use be restricted to small stresses.

BRIDAS COMBINADAS

Gracias a su especial diseño, no tienen posibilidad de girar sobre su eje.

Aunque forjadas en caliente, ejercen una mínima presión sobre la guía, por lo que pueden deslizar libremente, a la vez que soportar grandes esfuerzos.

Combinan las ventajas de las bridas forjadas y de las bridas elásticas.

Recomendadas para todo tipo de alturas.

COMBINED CLIPS

Thanks to their special design, there is no way they will turn over their axis.

Although they are hot forged, they exercise a minimum pressure on the guide rail, hence they can slide freely at the same time as they can support great stresses.

They combine the advantages of forged clips and sliding clips. Recommended for all kinds of heights.

Bridas Clips

SaveraGroup



Savera



**Savera
Services**



Emesa



SAMEC



SG Savera



HSG

NARUSHIMA
NARUSHIMA CORPORATION

SaveraGroup

Akarregi Auzoa 22 - 20120 Hernani - Gipuzkoa. Spain
Tel. +34 943 33 54 50 - Fax +34 943 33 54 55
saveragroup@saveragroup.com - Web www.saveragroup.com

Savera

B. de Zalain - 31780 Vera de Bidasoa - Navarra. Spain
Tel. +34 948 62 69 00 - Fax +34 948 62 69 04
savera@savera.es

SaveraServices

Akarregi Auzoa 22 - 20120 Hernani - Gipuzkoa. Spain
Tel. +34 943 33 55 77 - Fax +34 943 33 57 96
savservices@savservices.com

Emesa

Camino del Sabinar SN - Pol. Industrial de Valdemuel - Épila
50299 Zaragoza. Spain
Tel. +34 976 81 91 91 - Fax +34 976 60 39 98
emesa@sgemesa.com

Samec

Rua Oliveiros, 1426 - CEP 26030-010 - Posse - Nova Iguaçu
RJ. Brazil
Tel. 55 21 2 667 25 12 - Fax 55 21 2 667 25 20
samec@samec.com.br

SG Savera

Daxing Beijing 102600 P.R. China
Tel. 86 10 60259670 - Fax 86 10 60259347
saverach@163bj.com

HSG

Stockumer Strasse 28 - 58453 Witten. Germany
Tel. +49 (0) 2302 28237 10 - Fax +49 (0) 2302 28237 18
info@hsg-savera.de

Narushima Corporation

3-35-12 Nishikoujiya, Ohta-ku - Tokio 144-0034 Japan
Tel. +81 3 3745 2828 - Fax +81 3 3741 0666
akira.narushima@nr-tq.co.jp

Última actualización disponible en la web: www.saveragroup.com
Last update available on the Web: www.saveragroup.com